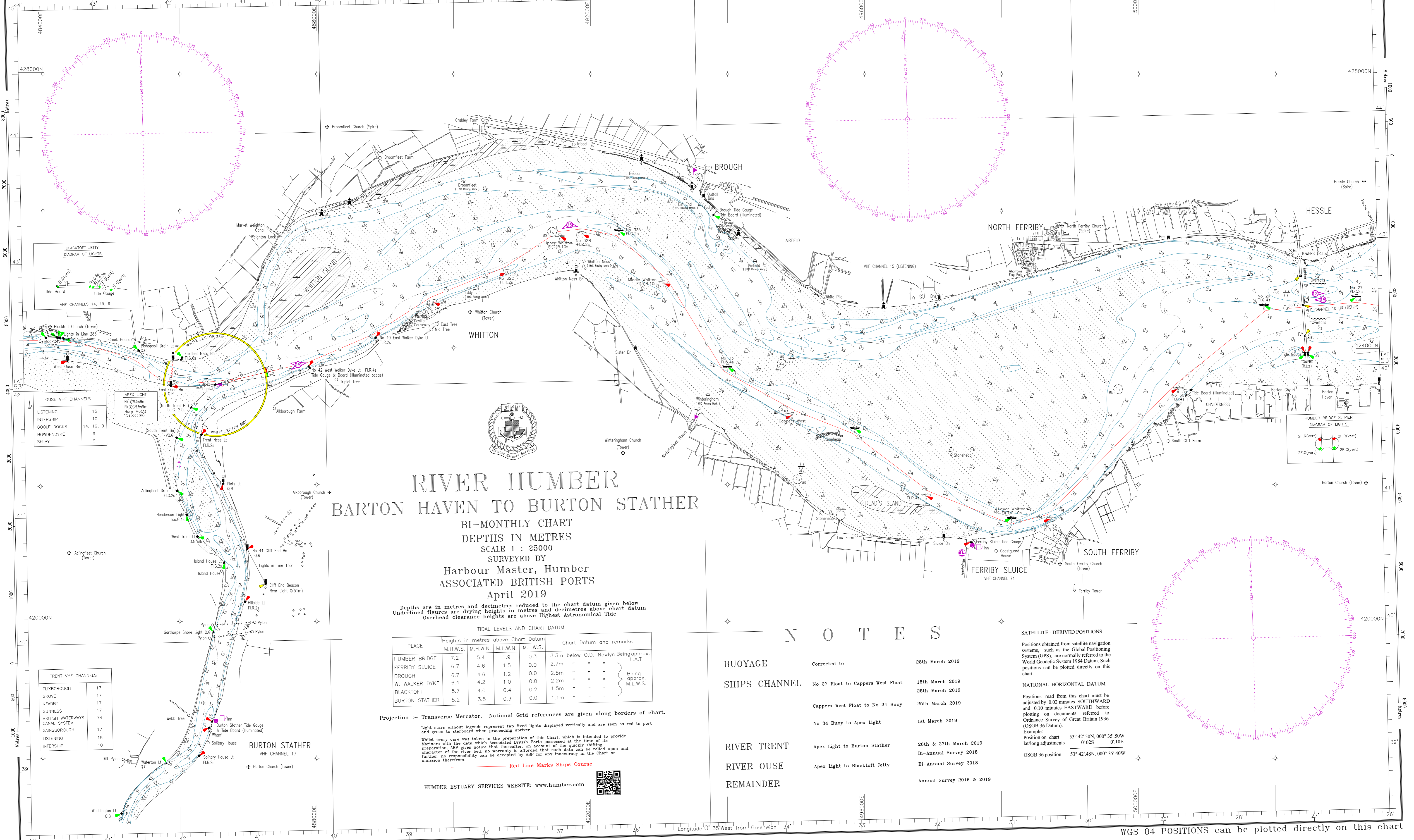


WGS 84 POSITIONS can be plotted directly on this chart



RIVER HUMBER BARTON HAVEN TO BURTON STATHER

BI-MONTHLY CHART
DEPTHS IN METRES
SCALE 1 : 25000

SURVEYED BY
**Harbour Master, Humber
ASSOCIATED BRITISH PORTS**
April 2019

Depths are in metres and decimetres reduced to the chart datum given below
Underlined figures are drying heights in metres and decimetres above chart datum
Overhead clearance heights are above Highest Astronomical Tide

TIDAL LEVELS AND CHART DATUM

PLACE	Heights in metres above Chart Datum				Chart Datum and remarks
	M.H.W.S.	M.H.W.N.	M.L.W.N.	M.L.W.S.	
HUMBER BRIDGE	7.2	5.4	1.9	0.3	3.3m below O.D. Newlyn Being approx. L.A.T
FERRIBY SLUICE	6.7	4.6	1.5	0.0	2.7m - - - - -
BROUGH	6.7	4.6	1.2	0.0	2.5m - - - - -
W. WALKER DYKE	6.4	4.2	1.0	0.0	2.2m - - - - -
BLACKTOFT	5.7	4.0	0.4	-0.2	1.5m - - - - -
BURTON STATHER	5.2	3.5	0.3	0.0	1.1m - - - - -

Projection :- Transverse Mercator. National Grid references are given along borders of chart.

Light stars without legends represent two fixed lights displayed vertically and are seen as red to port and green to starboard when proceeding upriver.
Whilst every care was taken in the preparation of this Chart, which is intended to provide Mariners with the data which Associated British Ports possessed at the time of its preparation, ABP gives notice that thereafter, on account of the quickly shifting character of the river bed, no warranty is afforded that such data can be relied upon and further, no responsibility can be accepted by ABP for any inaccuracy in the Chart or omission therefrom.

Red Line Marks Ships Course
HUMBER ESTUARY SERVICES WEBSITE: www.humber.com



N O T E S

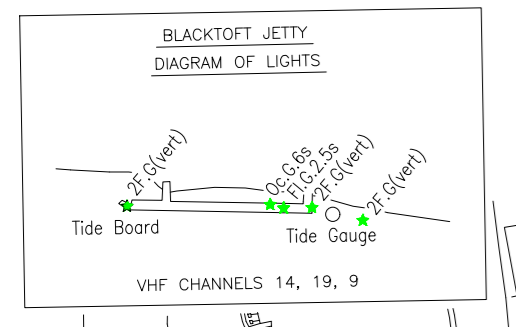
- BUOYAGE** Corrected to **28th March 2019**
- SHIPS CHANNEL** No 27 Float to Cappers West Float **15th March 2019**
- Cappers West Float to No 34 Buoy **25th March 2019**
- No 34 Buoy to Apex Light **1st March 2019**
- RIVER TRENT** Apex Light to Burton Stather **26th & 27th March 2019**
- RIVER OUSE** Apex Light to Blacktoft Jetty **Bi-Annual Survey 2018**
- REMAINDER** **Annual Survey 2016 & 2019**

SATELLITE - DERIVED POSITIONS

Positions obtained from satellite navigation systems, such as the Global Positioning System (GPS), are normally referred to the World Geodetic System 1984 Datum. Such positions can be plotted directly on this chart.

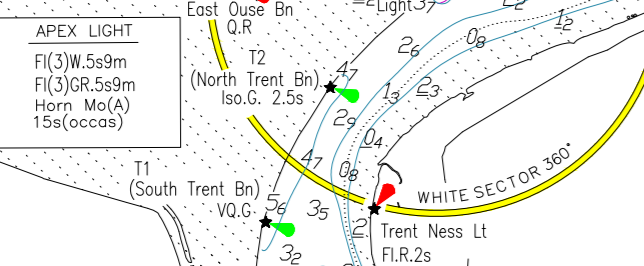
NATIONAL HORIZONTAL DATUM

Positions read from this chart must be adjusted by 0.02 minutes SOUTHWARD and 0.10 minutes EASTWARD before plotting on documents referred to Ordnance Survey of Great Britain 1936 (OSGB 36 Datum).
Example:
Position on chart lat/long adjustments 53° 42' 50N, 000° 35' 50W
0.02S 0.10E
OSGB 36 position 53° 42' 48N, 000° 35' 40W



OUSE VHF CHANNELS

LISTENING	15
INTERSHIP	10
GOOLE DOCKS	14, 19, 9
HOWDENDYKE	9
SELBY	9



TRENT VHF CHANNELS

FLIXBOROUGH	17
GROVE	17
KEADBY	17
GUNNESS	17
BRITISH WATERWAYS CANAL SYSTEM	74
GAINSBOROUGH	17
LISTENING	15
INTERSHIP	10

